

February 2019

Qualcomm

Transforming Mobile Connectivity

Dino Bekis

VP & GM, Mobile/Compute Connectivity

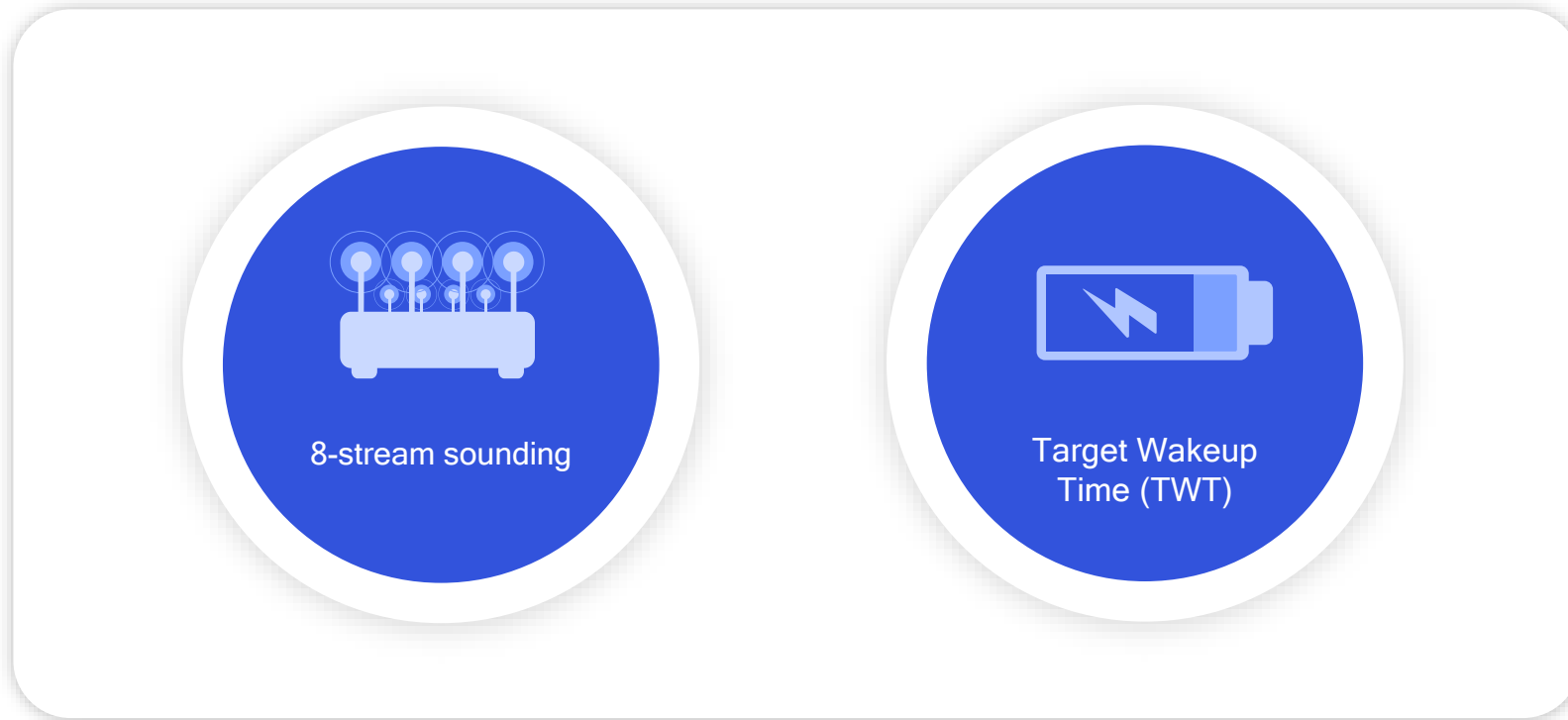
Qualcomm Technologies, Inc.

Ushering in the 5G Era with Wireless Innovation Leadership

Cellular evolution



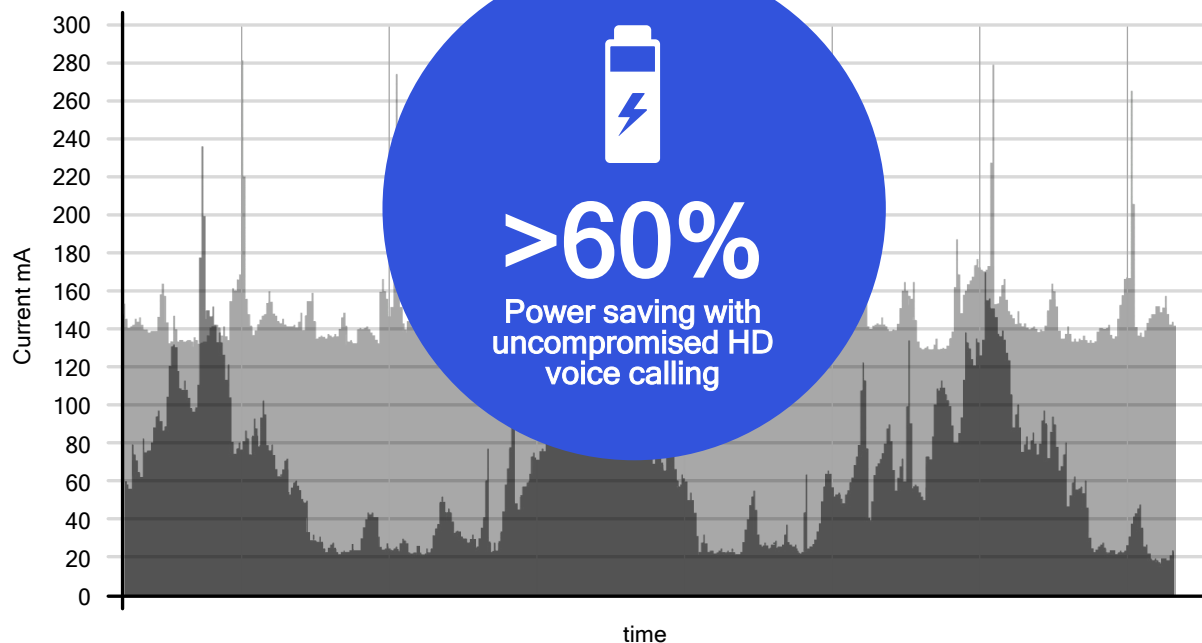
Wi-Fi 6-Ready Features



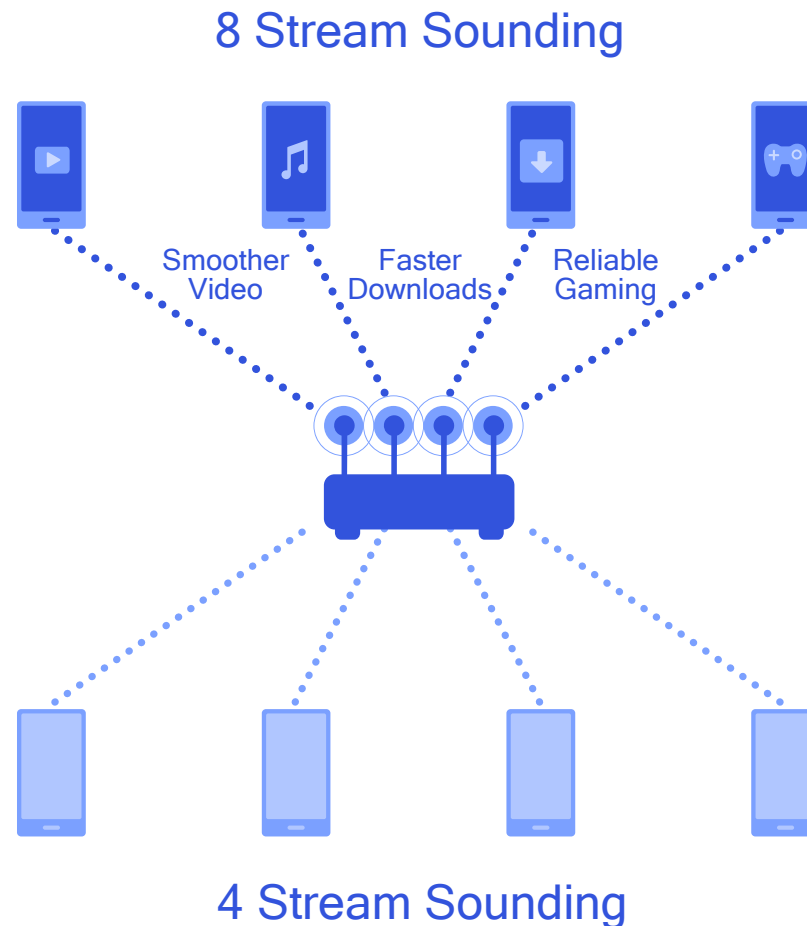
Accelerated key Wi-Fi 6 features on
Qualcomm® Snapdragon™ Mobile Platforms

Wi-Fi 6-Ready Features for Next-Generation Power Efficiency and Performance

Without Target Wakeup Time



With Target Wakeup Time



Wi-Fi 6 Security



WPA-3

Wi-Fi Protected Access 3



Password
protection



Public network
privacy



Secure device
onboarding

Going Above & Beyond

Full suite of WPA-3 mandatory and optional features supported

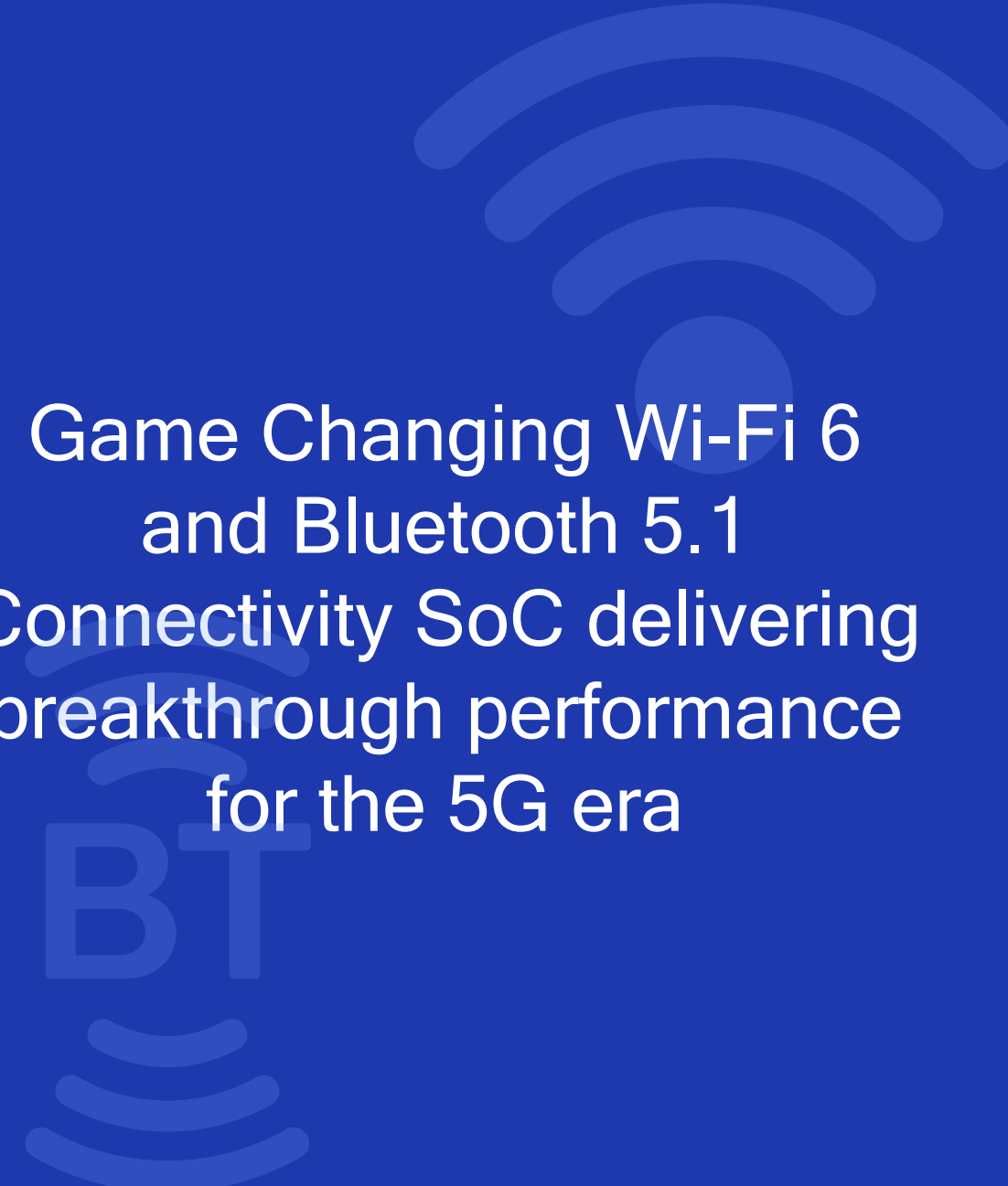
- WPA3 Personal
- WPA3 Enterprise
- WPA3 Enhanced Open
- WPA3 Easy Connect

Qualcomm Technologies' mobile and network infrastructure Wi-Fi products support full WPA3 Suite

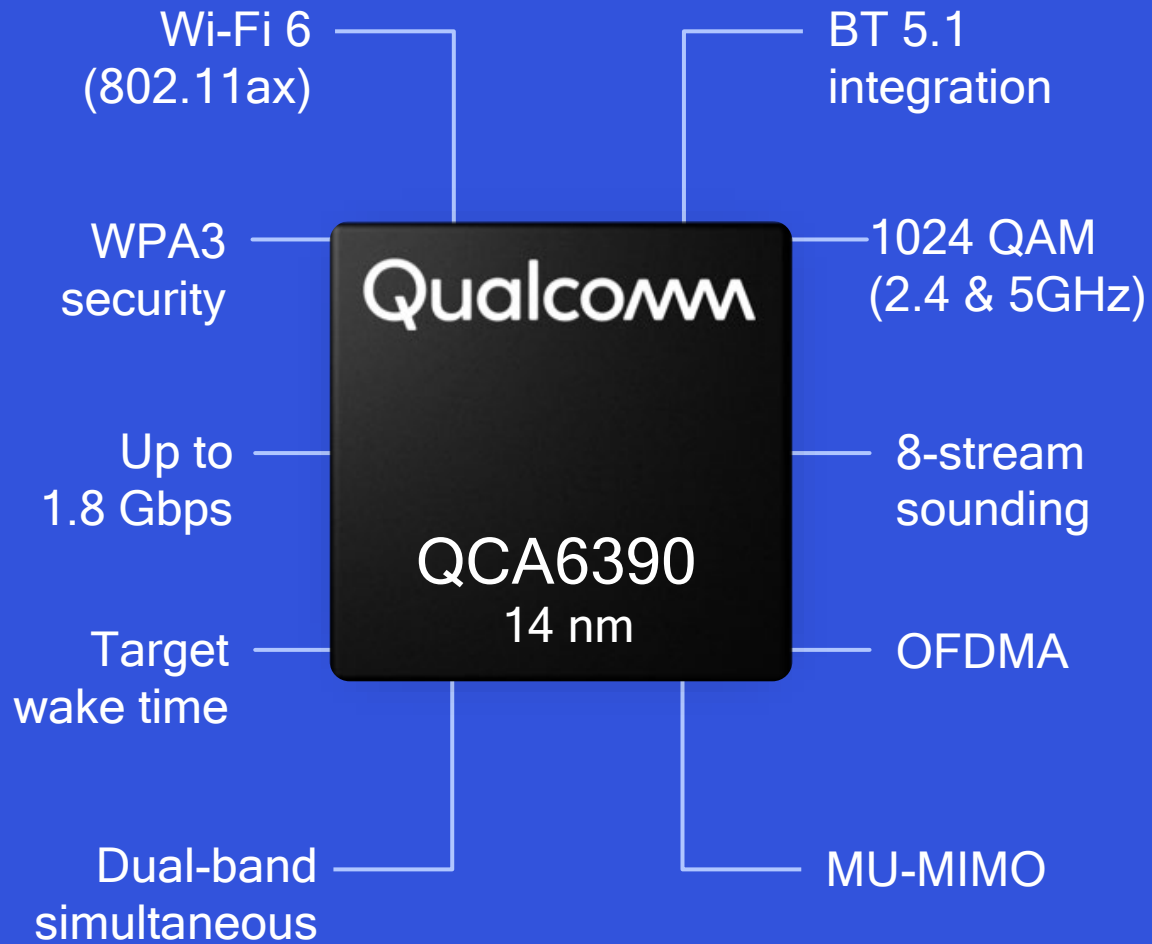
A black rectangular chip with the Qualcomm logo and model number QCA6390 printed in white.

Qualcomm

QCA6390

Faint background icons for Wi-Fi (top right) and Bluetooth (bottom center) in a lighter blue shade.

Game Changing Wi-Fi 6
and Bluetooth 5.1
Connectivity SoC delivering
breakthrough performance
for the 5G era



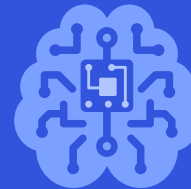
Wi-Fi 6 features go beyond spec requirements

Differentiation for our customers and enhanced experiences for consumers



Enhanced features building on Bluetooth 5.1

New crystal clear voice and highly responsive gaming audio capabilities



Qualcomm Technologies' expertise in mobile technology

System wide performance and coex across Wi-Fi, BT, LTE and 5G

Qualcomm QCA6390

Wi-Fi 6-Ready Features

Wi-Fi 6-Ready Features



Wi-Fi 6 Performance Above and Beyond



Number of Connections

Past: 1 to 1

Present: Dedicated L and R stereo

QCA6390: 1 to many broadcast



Latency

Past: 400 mS for audio streaming

Present: 200 mS

QCA6390: 80 mS for video lip sync



Codec Quality

Past: Narrow band

Present: Wide band

QCA6390: Ultra-high definition

Reimagining Bluetooth Audio Experiences with QCA6390



QCA6390

Wi-Fi and Bluetooth innovation for 5G-era mobile users

Higher speed and efficient capacity

Richer uplink/downlink content

Lower latency for gaming and audio

Performance provided in more places

Security and power efficiency

Highlights

Speed

Up to 1.8 Gbps

Capacity & Range

8 Stream Sounding for 8x8 MU-MIMO
Applied Wi-Fi 6 across 2.4 and 5 GHz

Security

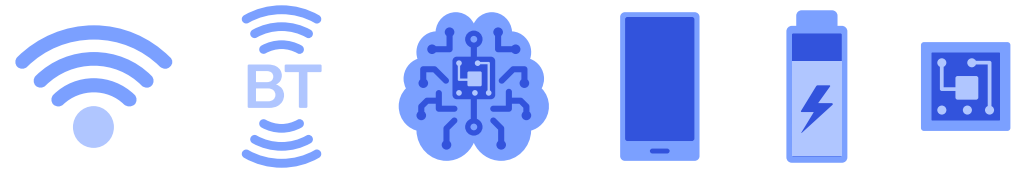
Full suite of WP3 options

Integration

Wi-Fi 6 and Bluetooth 5.1

Qualcomm Technologies Expertise





Efficient 14nm process node
Wi-Fi, BT, Cellular coexistence



Differentiation for our customers
Next generation experiences for users



Thank you

Follow us on:    

For more information, visit us at:

www.qualcomm.com & www.qualcomm.com/blog

Nothing in these materials is an offer to sell any of the components or devices referenced herein.

©2018-2019 Qualcomm Technologies, Inc. and/or its affiliated companies. All Rights Reserved.

Qualcomm and Snapdragon are trademarks of Qualcomm Incorporated, registered in the United States and other countries. Other products and brand names may be trademarks or registered trademarks of their respective owners.

References in this presentation to “Qualcomm” may mean Qualcomm Incorporated, Qualcomm Technologies, Inc., and/or other subsidiaries or business units within the Qualcomm corporate structure, as applicable. Qualcomm Incorporated includes Qualcomm’s licensing business, QTL, and the vast majority of its patent portfolio. Qualcomm Technologies, Inc., a wholly-owned subsidiary of Qualcomm Incorporated, operates, along with its subsidiaries, substantially all of Qualcomm’s engineering, research and development functions, and substantially all of its product and services businesses, including its semiconductor business, QCT.



Driving industry transition to Wi-Fi 6, end-to-end

Unprecedented capacity and performance for dense Wi-Fi networks

