

EMBARGOED UNTIL FEBRUARY 25, 2019

Qualcomm

# Qualcomm<sup>®</sup> Robotics RB3 Platform

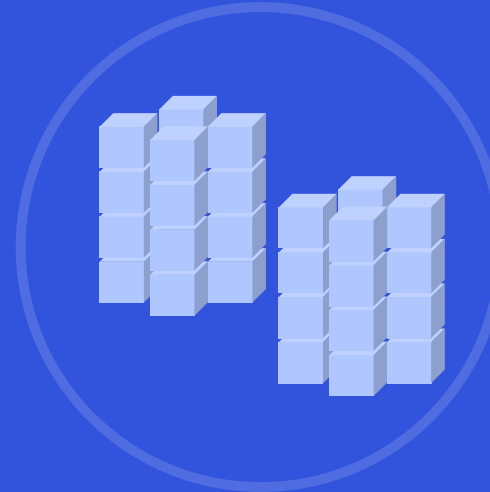
# Robotics



Home Entertainment robots



Public safety robots



Warehouse/Logistic robots



Factory robots

Different types of robots are being integrated in our daily lives.  
We aspire to build solutions for all of them



Retail Robots



Caregiver Robots



Home Care Robots



Robotic Smart Assistant

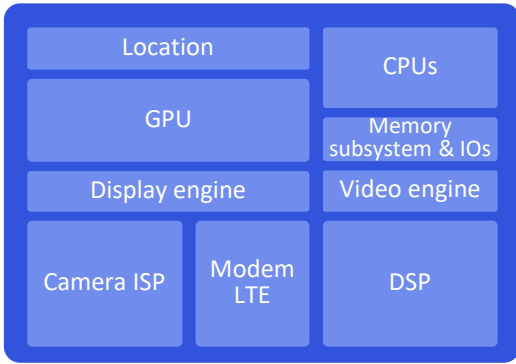
# Qualcomm Technologies are at the heart of a wide array of robotic products available today

Companion / Entertainment, Cleaning / Home Care, Drones, Enterprise / Industrial



**20+** Products launched

**20+** Products in development



## High Performance / Integrate SOC

Optimized heterogeneous computing platform, at low power and small form-factors



## HLOS

Linux, ROS



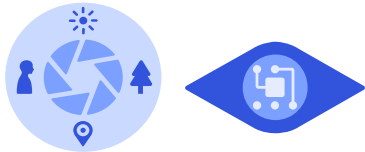
## Connectivity

Wi-Fi & Cellular



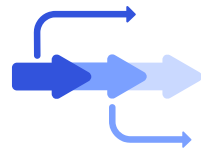
## Security

Authentication and Execution



## Camera

Computer vision



Hard real time Control for Autonomous Navigation

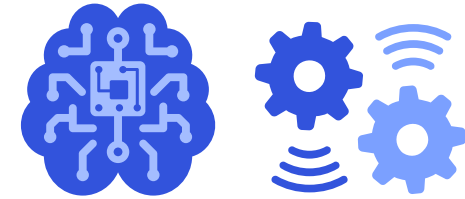


High-fidelity sensor processing



Precise localization

## On-board intelligence



## AI / Machine Learning

Detection, Classification, Navigation and Engagement

# What makes Qualcomm Technologies relevant for robotics?

# Qualcomm® Robotics RB3 Platform

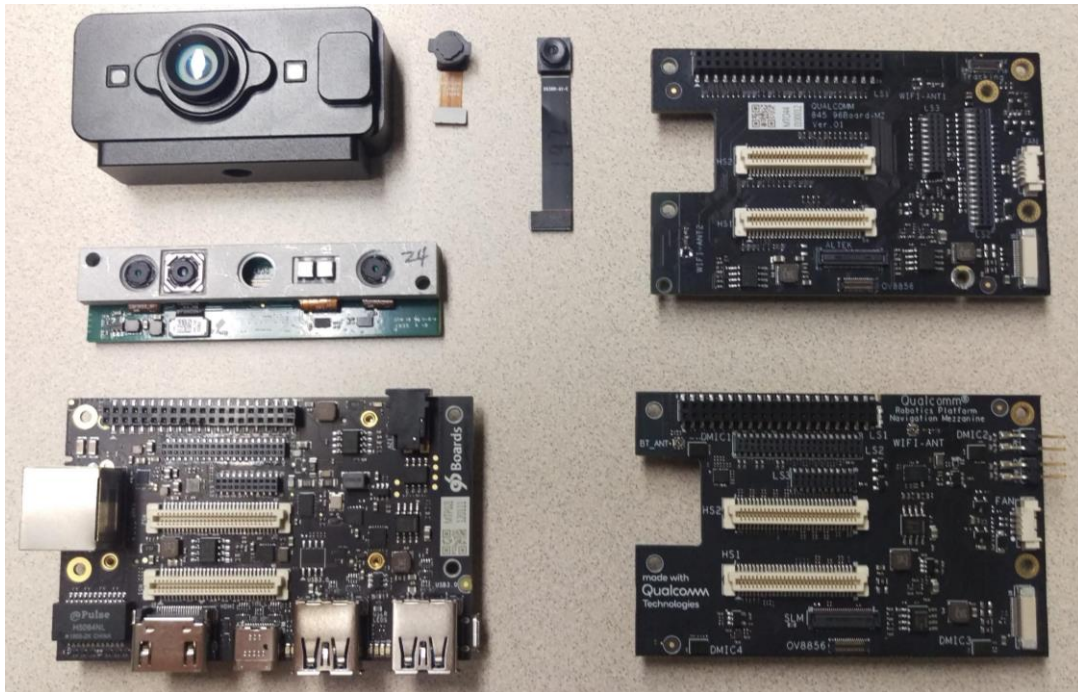
Dedicated platform to build smart, power-efficient and cost-effective robots



- For large industrial and enterprise robots to small battery-operated one's with challenging power and thermal dissipation requirements.
- High-performance heterogeneous computing with Qualcomm® SDA/SDM845
- Qualcomm® Artificial Intelligence (AI) Engine for on-device machine learning
- Computer vision
- Vault-like security
- Multimedia
- Wi-Fi and cellular connectivity (4G/LTE, CBRS and support for 5G)
- Supports flexible commercialization choices: dev board/kit, SOM, chip-on-board
- Linux, ROS, AWS RoboMaker

# Qualcomm Robotics RB3 Development Kit



Featured packed and customizable



- DragonBoard™ 845c (96boards compliant open hardware specification)
- Qualcomm Robotics navigation mezzanine (featuring time-of-flight (ToF), tracking camera, stereo camera, and main camera)
- Power supply
- Multi-mic support
- Sensor support such as IMU and proximity
- Optional LTE/CBRS cellular mezzanine



# Thank you!

Follow us on:   

For more information, visit us at:

[www.qualcomm.com](http://www.qualcomm.com) & [www.qualcomm.com/blog](http://www.qualcomm.com/blog)

Nothing in these materials is an offer to sell any of the components or devices referenced herein.

©2018-2019 Qualcomm Technologies, Inc. and/or its affiliated companies. All Rights Reserved.

Qualcomm is a trademark of Qualcomm Incorporated, registered in the United States and other countries. Other products and brand names may be trademarks or registered trademarks of their respective owners.

References in this presentation to “Qualcomm” may mean Qualcomm Incorporated, Qualcomm Technologies, Inc., and/or other subsidiaries or business units within the Qualcomm corporate structure, as applicable. Qualcomm Incorporated includes Qualcomm’s licensing business, QTL, and the vast majority of its patent portfolio. Qualcomm Technologies, Inc., a wholly-owned subsidiary of Qualcomm Incorporated, operates, along with its subsidiaries, substantially all of Qualcomm’s engineering, research and development functions, and substantially all of its product and services businesses, including its semiconductor business, QCT.