



# AI

---

**Gary Brotman**

Director, Product Management  
Qualcomm Technologies, Inc.  
@qualcomm



# AI is changing everything

---



Finance



Healthcare



Entertainment



Transportation



Insurance



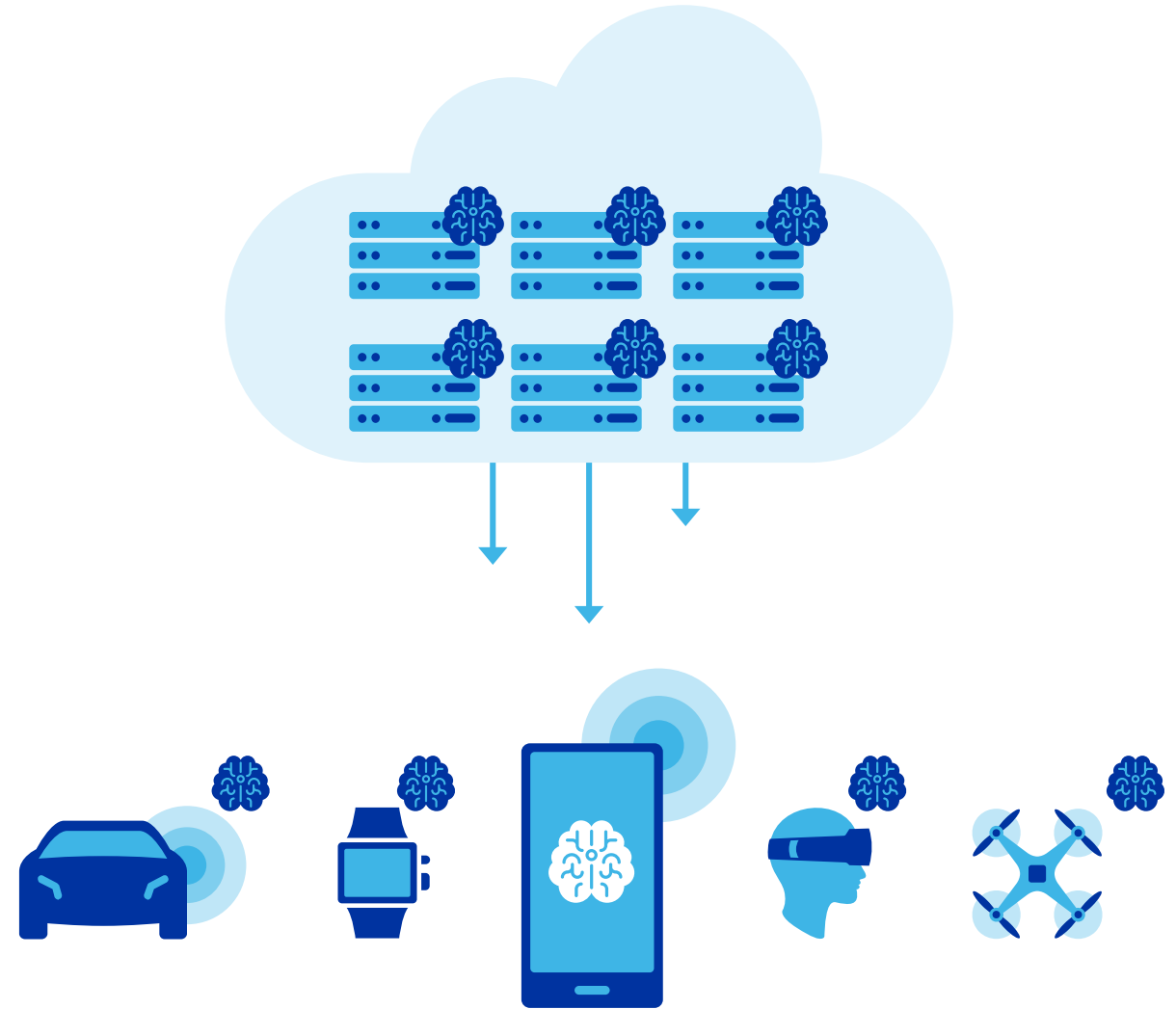
Mobile Communications

# Intelligence moving from the cloud to the edge

Low latency

Privacy

Reliability



# Richer, more personalized, more exciting devices

---

eXtended Reality

Immersive Gaming

Intuitive Audio

Health and Fitness



Mobile - THE most pervasive AI platform

# >8.6 Billion

Cumulative smartphone unit shipments  
forecast between 2017-2021



## AI software, hardware, and services



How do we make  
this happen?

---



# Snapdragon 845

## 3<sup>rd</sup> generation mobile AI platform

---

Our smartest system for  
intelligent mobility





# Snapdragon 845 AI

Core Optimizations

Developer Choice

3X AI performance of 835

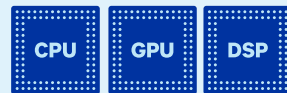




# Snapdragon Neural Processing Engine

Software accelerated runtime  
for the execution of deep neural  
networks on device

Available at:  
[developer.qualcomm.com](http://developer.qualcomm.com)



Efficient execution  
on Snapdragon

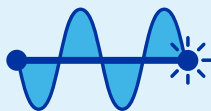


Model framework/  
network support



Developer Tools

What's new?



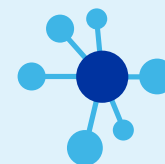
Fixed and floating point  
optimizations



Supports  
TensorFlow Lite

**ONNX**

Supports Caffe2,  
CNTK, MxNet



Optimizations for  
new networks



Caffe



ONNX

GoogleNet

Inception

SSD

Alexnet

ResNet

SqueezeNet

Faster - RCNN

MobileNet

NPE

CPU

DSP

GPU



Object classification



Face detection



Scene segmentation



Natural language understanding



Speaker recognition



Security/Authentication



Resource management



Mobile



Auto



Home



Cameras



XR



## History of deep AI collaboration

---

**Google:** TensorFlow/Android NN

**Facebook:** Caffe 2/Style Transfer

**Motorola:** Landmark Detection

**OPPO:** Face Unlock & Camera

# Snapdragon AI Developer Ecosystem

The logo for SenseTime, featuring the word "SENSE" in red and "TIME" in a stylized red font, all contained within a light blue circle.

SENSETIME

The logo for Face++, featuring the text "Face++" in white on a blue rectangular background, all contained within a light blue circle.

Face++

The logo for Thundercomm, featuring the word "Thundercomm" in a stylized font with a yellow lightning bolt, all contained within a light blue circle.

Thundercomm

The logo for ellipticlabs, featuring the word "ellipticlabs" in a lowercase, black, sans-serif font, all contained within a light blue circle.

ellipticlabs

The logo for Uncanny Vision, featuring a stylized red and black "V" shape above the text "Uncanny Vision®", all contained within a light blue circle.

Uncanny Vision®

...and more on the way!



# Photography: better and easier

---

Video Style Transfer

Deep Portrait/Single Camera Bokeh

Face Authentication and Unlock





# A more personal assistant

---

Accurate Detection

Faster Controls

More Natural Interaction





# AI highlights

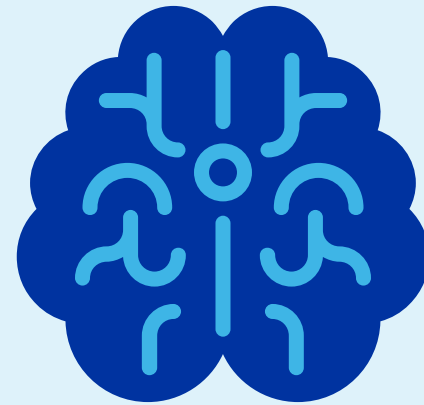
---

3rd gen mobile AI platform

Platform-wide optimizations

Growing AI ISV ecosystem

More immersive user experiences



# Thank you

---

Follow us on:   

For more information, visit us at:

[www.qualcomm.com](http://www.qualcomm.com) & [www.qualcomm.com/blog](http://www.qualcomm.com/blog)



Nothing in these materials is an offer to sell any of the components or devices referenced herein.

©2017 Qualcomm Technologies, Inc. and/or its affiliated companies. All Rights Reserved.

Qualcomm, Snapdragon, Adreno, Hexagon, Aqstic, Kryo, and Spectra are trademarks of Qualcomm Incorporated, registered in the United States and other countries. Other products and brand names may be trademarks or registered trademarks of their respective owners.

References in this presentation to “Qualcomm” may mean Qualcomm Incorporated, Qualcomm Technologies, Inc., and/or other subsidiaries or business units within the Qualcomm corporate structure, as applicable. Qualcomm Incorporated includes Qualcomm’s licensing business, QTL, and the vast majority of its patent portfolio. Qualcomm Technologies, Inc., a wholly-owned subsidiary of Qualcomm Incorporated, operates, along with its subsidiaries, substantially all of Qualcomm’s engineering, research and development functions, and substantially all of its product and services businesses, including its semiconductor business, QCT.