



Qualcomm Networking Pro 1200 Platform

12-stream Wi-Fi 6 (802.11ax) network solution, designed for the growing demands of increasingly crowded and dense Wi-Fi environments.

The Qualcomm® Networking Pro 1200 platform sets a new benchmark for premium-tier networking by harnessing up to 12-streams of Wi-Fi 6 connectivity, powerful computing, and an architecture built for the most challenging infrastructure environments.

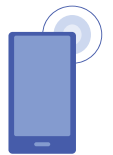
The Qualcomm Networking Pro 1200 platform includes next-generation Wi-Fi 6 features like optimized multi-user scheduling of both uplink and downlink MU-MIMO and OFDMA across all 12 spatial streams of Wi-Fi 6 connectivity. Additional Wi-Fi 6 features include 1024QAM, BSS coloring, and WPA3 security, all delivered on an architecture that can successfully associate and maintain connectivity for up to 1500 client devices simultaneously.

The Qualcomm Networking Pro 1200 platform is the ideal architecture for premium-tier access points, retail routers, and gateways for next-gen enterprise and carrier-class deployments.

Highlights

Superior Connectivity

Up to 12 spatial streams of Wi-Fi 6 connectivity across both 5 and 2.4 GHz bands, dual or tri-radio configurability, and multi-user scheduling across downlink and uplink MU-MIMO and OFDMA to simultaneously manage up to 1500 users.



Powerful Computing

A 64-bit quad-core CPU gives this platform computing power, and, when combined with our superior design architecture, offers additional capabilities for dynamic data processing and management.



Advanced Data Management

Our deep packet buffer capabilities allow for better data management in densely congested environments.



Powerful Networking Acceleration

Programmable network acceleration and 5 Gbps in line crypto for complex and secure data transfer with Wi-Fi driver offload while offloading CPU compute. Advanced networking interfaces for 10 GbE WAN and LAN, as well as 5G CPE deliver fixed wireless access.



Qualcomm Networking Pro 1200 Platform

12-stream Wi-Fi 6 (802.11ax) network solution, designed for the growing demands of increasingly crowded and dense Wi-Fi environments

Features

- Up to 12 spatial streams for delivery of maximum Wi-Fi 6 capacity
- Multi-user scheduling architecture uses advanced algorithms and deep packet buffer for a deterministic approach to resource allocation.
- Downlink/Uplink MU-MIMO supports 12 streams of Wi-Fi to simultaneously connect to MU-MIMO capable clients
- Downlink/Uplink OFDMA across all 12 spatial streams to provide efficient use of spectrum for small data packets supporting up to 37 users
- 1024 QAM support
- Up to 512 users per radio, flexible based on memory configuration
- Multi-Band Simultaneous Wi-Fi configurations for improved throughput across all bands of Wi-Fi
- Advanced network interfaces for 10 GbE WAN and LAN standard networking protocols and PCIe interface for platform extensions

Specifications

CPU	
CPU Clock Speed:	Up to 2.2 GHz
CPU Cores:	4x ARM Cortex A53
Process	
Process Technology:	14 nm FinFET
Wi-Fi	
Wi-Fi Standards:	802.11ax, 802.11ac, 802.11a/b/g, 802.11n
Wi-Fi Spectral Bands:	2.4 GHz, 5 GHz
Spatial Streams:	Up to 12
Peak speed:	6.0 Gbps
Wi-Fi Features:	1024 QAM, Advanced QoS, MU-MIMO, OFDMA, Uplink scheduling, TxBF, Qualcomm® Wi-Fi SON
Security Support	
Wi-Fi Security:	WPA3, WPA2, WPS, 802.11i security, AES-CCMP, AES-GCMP, PRNG, TKIP, WAPI, WEP
WPA3 Security:	Personal, Enterprise, Enhanced Open, Easy Connect
Memory	
Flash:	eMMC, NAND, Serial NOR
Memory Type:	DDR3L, DDR4
Interface	
platform extensions:	Bluetooth, 4G/5G FWA, 15.4
Supported Interfaces:	PCIe 3.0, PTA Coex, I ² S, I ² C, Ethernet, PCIe 2.0, PCM SD/eMMC, SDIO, SPI, UART, USB 3.0
Package	
Package Type:	FCBGA
Package Size:	21 x 21 mm
Part Number:	IPQ8078 v2, IPQ8076 v2, IPQ8074 v2, IPQ8072 v2

For additional Qualcomm product information go to:
createpoint.qti.qualcomm.com

To learn more visit: qualcomm.com