



Qualcomm

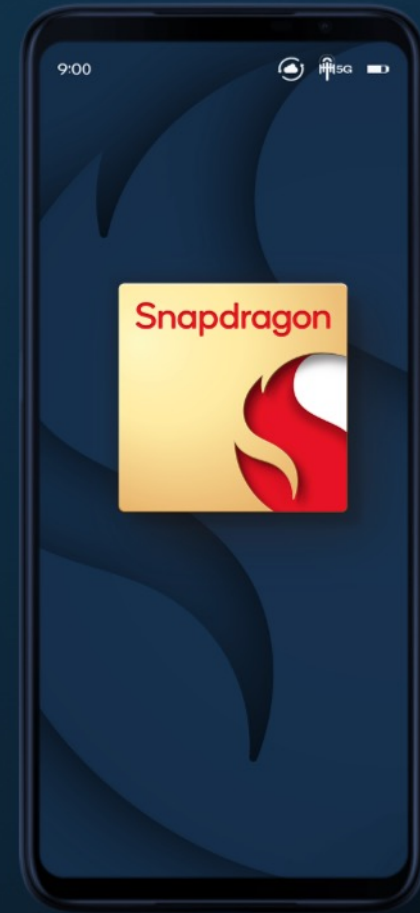
CES 2022 Press Conference

Cristiano Amon

President and Chief Executive Officer,
Qualcomm Incorporated

@cristianoamon

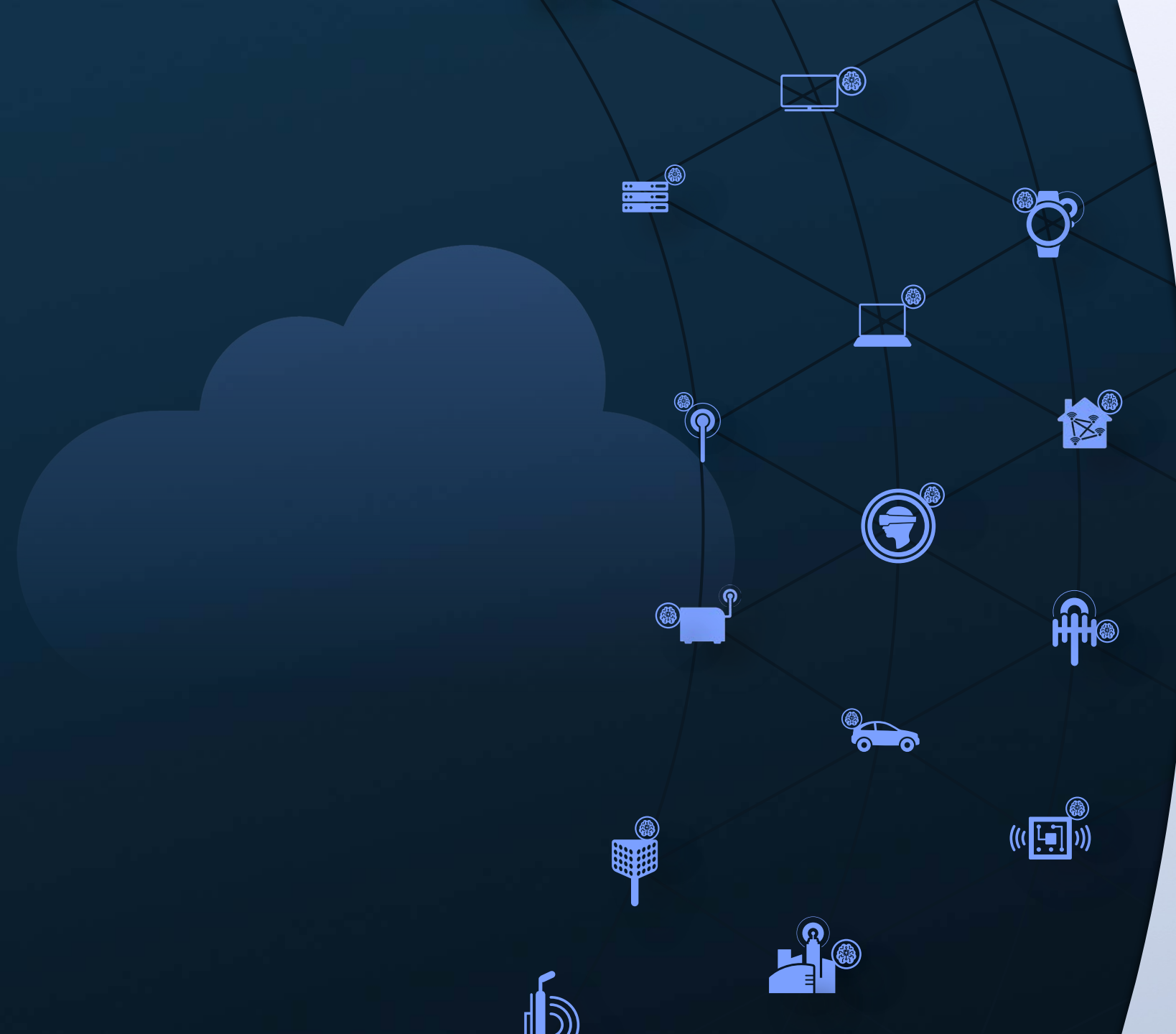
Mobile



Connected intelligent edge

Cloud growth requires the connected intelligent edge

More data at the edge requires more local processing and intelligence



Cloud growing at

35%

year-over-year¹

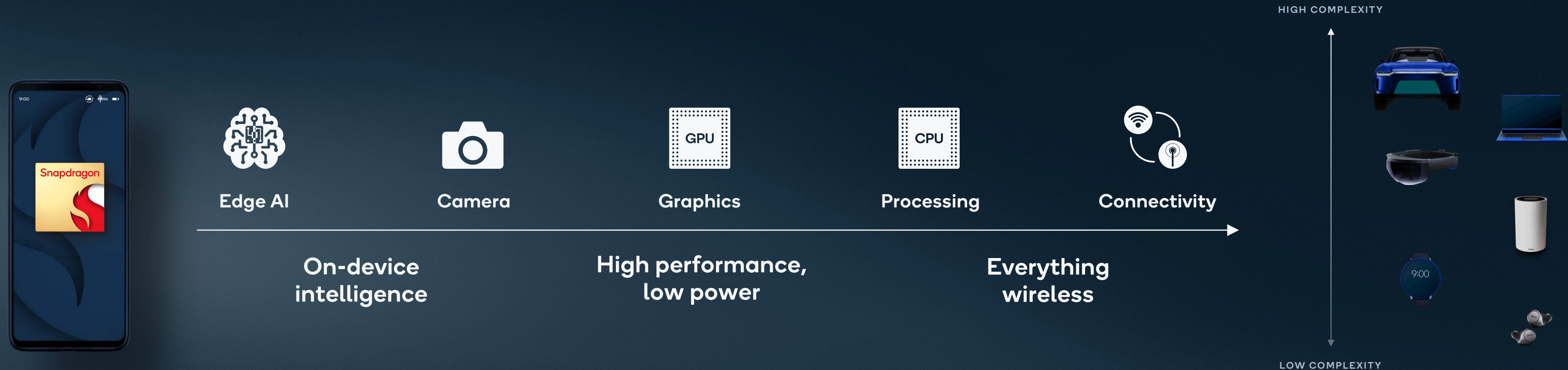
By 2025

64%

of data will be created outside of traditional data centers²

1. Canalys estimate of increase in cloud infrastructure spend for Q1 2021, April 2021; 2. IDC DataSphere Program, July 2021

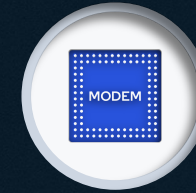
One technology roadmap that scales to address growth vectors



Snapdragon sets the bar for premium-tier Android smartphones



#1 **Connectivity**
Fastest 5G and Wi-Fi speeds¹



#1 **Qualcomm® AI Engine**
Leading on-device AI use cases
and performance per watt²



#1 **Snapdragon Sound™**
CD Lossless and LE Audio for Bluetooth³



#1 **Snapdragon Sight™**
Leading with mobile-first camera features⁴



#1 **Security**
Leading security features for mobile⁵



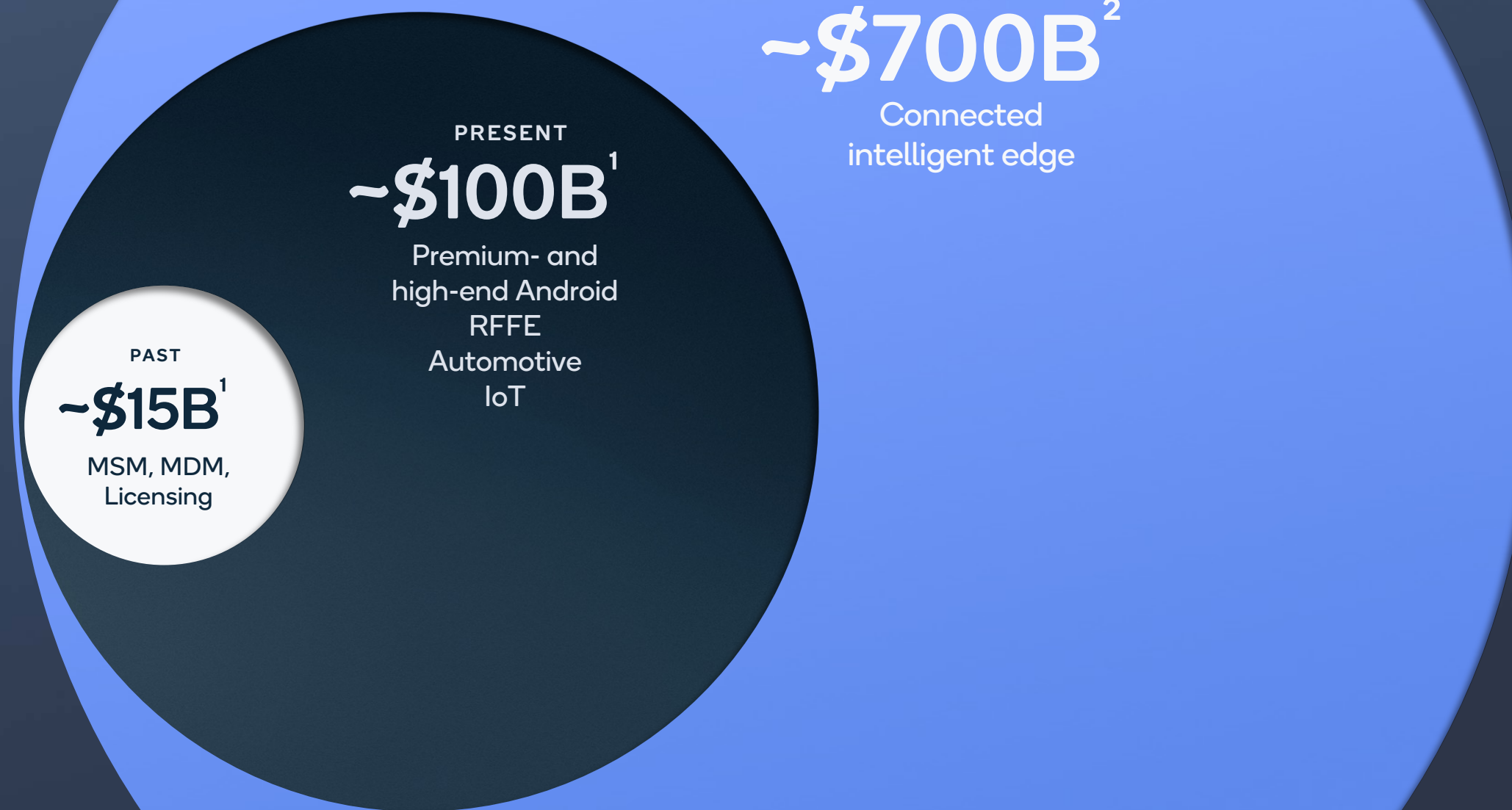
#1 **Snapdragon Elite Gaming™**
Leading in desktop-level features on mobile⁶



1. First-announced 10 Gigabit 5G and 3GPP Release 16 Modem-RF System, fastest Wi-Fi peak speeds in commercially available device and access point chipsets; 2. Internal competitive analysis; 3. First announced audio codec for CD Lossless quality over Bluetooth; 4. First 8K HDR Video Capture and 18-bit ISP; 5. First announced support for Android-ready SE standard, always-on camera; 6. Internal competitive analysis; Snapdragon Elite Gaming, Snapdragon Sight, Snapdragon Sound and Qualcomm AI Engine are products of Qualcomm Technologies, Inc. and/or its subsidiaries

> 7x

Addressable market
expansion in the
next decade



1. SAM: Servicable Addressable Opportunity; 2. TAM: Total Addressable Opportunity. A combination of internal and third-party estimates

Continued momentum across key opportunities



Next-gen Arm PCs

Driving convergence of PC and mobile

Arm transition + Next-gen CPU leadership with Nuvia team



The ticket to the metaverse

Building the next computing platform with XR

50+ Snapdragon AR/VR devices launched



Wireless fiber

5G makes Fixed Wireless Access a global reality



ADAS

Powering 21st century vehicles

Arriver¹ software and Snapdragon Ride™ Platform

1. Acquisition expected to close in 2022, subject to regulatory approval and other closing conditions. Snapdragon Ride is a product of Qualcomm Technologies, Inc. and/or its subsidiaries.

Shift to PC on Arm is gaining ecosystem momentum with Snapdragon



"Leveraging the cutting-edge Arm-based Snapdragon compute platforms from Qualcomm Technologies, Inc., we can deliver more best-in-class Windows 11 experiences ..."

JAMES LIN

GENERAL MANAGER, NOTEBOOKS,
IT PRODUCTS BUSINESS



Microsoft

"... we are excited to continue our incredible collaboration with Qualcomm on Windows on Arm, creating innovative products and experiences to empower people."

PANOS PANAY

CHIEF PRODUCT OFFICER

Lenovo

"... Lenovo is proud of our close collaboration with Qualcomm. Together we're engineering new Windows on Snapdragon devices for everyone ..."

LUCA ROSSI

PRESIDENT OF INTELLIGENT DEVICES GROUP



"... we are excited about the power efficiency opportunity of the advanced Arm architecture to enable breakthrough experiences on lightweight, fanless devices. We look forward to our ongoing collaboration with Qualcomm ..."

MIKE NASH

CHIEF TECHNOLOGIST AND GLOBAL HEAD, CUSTOMER EXPERIENCE
AND PORTFOLIO STRATEGY, PERSONAL SYSTEMS, HP INC.



"... Qualcomm Technologies, Inc. continues to transform the Windows PC industry with an impressive portfolio of Arm-based Snapdragon compute platforms ..."

ALVIN CHOU

GENERAL MANAGER OF COMMERCIAL COMPUTER BU

Announcement

Powering the enterprise transition to Arm PCs

200 enterprises either testing or deploying Windows on devices with Snapdragon



Lenovo

verizon[✓]

T Mobile



Microsoft
Mesh



Qualcomm



Snapdragon
spaces

5G, including mmWave, is a universal last mile technology



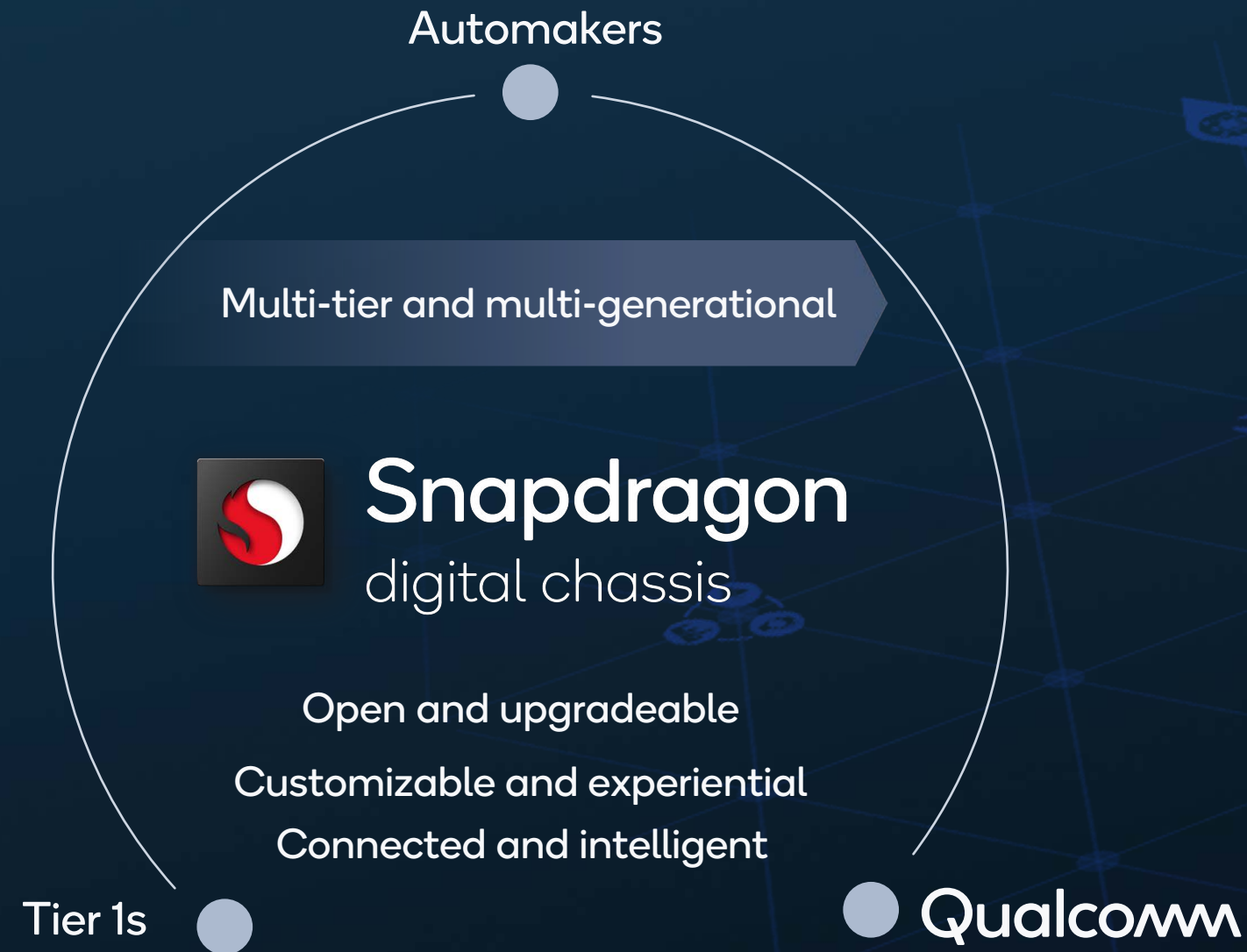
Wireless fiber

"All around us at home, work and on the go, customer demand for connectivity is accelerating. To stay ahead of it, we're focused on **5G as a core technology** for both **backhaul and direct broadband access** connecting **homes and businesses**. What we're seeing from Qualcomm Technologies around Fixed Wireless Access gives us confidence we'll have the products to keep delivering for our customers."

JEFF McELFRESH
CEO, AT&T COMMUNICATIONS

Redefining vehicles for the 21st century

Helping automakers and Tier 1s to create differentiated experiences





Snapdragon

digital chassis

A platform for the
future of automotive



Snapdragon

car-to-cloud

Software and services
platforms to drive new
monetization models



Snapdragon

ride platform

L2+ / L3 Driver Assistance
and Automated Driving SoC
Platforms with Arriver Vision
and Drive Policy stacks¹



Snapdragon

cockpit platform

In-car experiences that integrate
instrument clusters, navigation,
premium audio, cameras and multiple
displays with app ecosystems



Snapdragon

auto connectivity platform

5G connectivity to cloud, C-V2X,
Wi-Fi and Bluetooth within and
around the vehicle, precise positioning
and PLC for EV charging

1. Arriver expected to close in 2022, subject to regulatory approval and other closing conditions; Snapdragon digital chassis, Snapdragon car-to-cloud, Snapdragon ride platform, Snapdragon cockpit platform, and Snapdragon auto connectivity platform are products of Qualcomm Technologies, Inc. and/or its subsidiaries

**Moving toward
immersive driving
experiences**





Snapdragon
cockpit platform



Henrik Green

Chief Product Officer, Volvo Cars





Snapdragon
cockpit platform



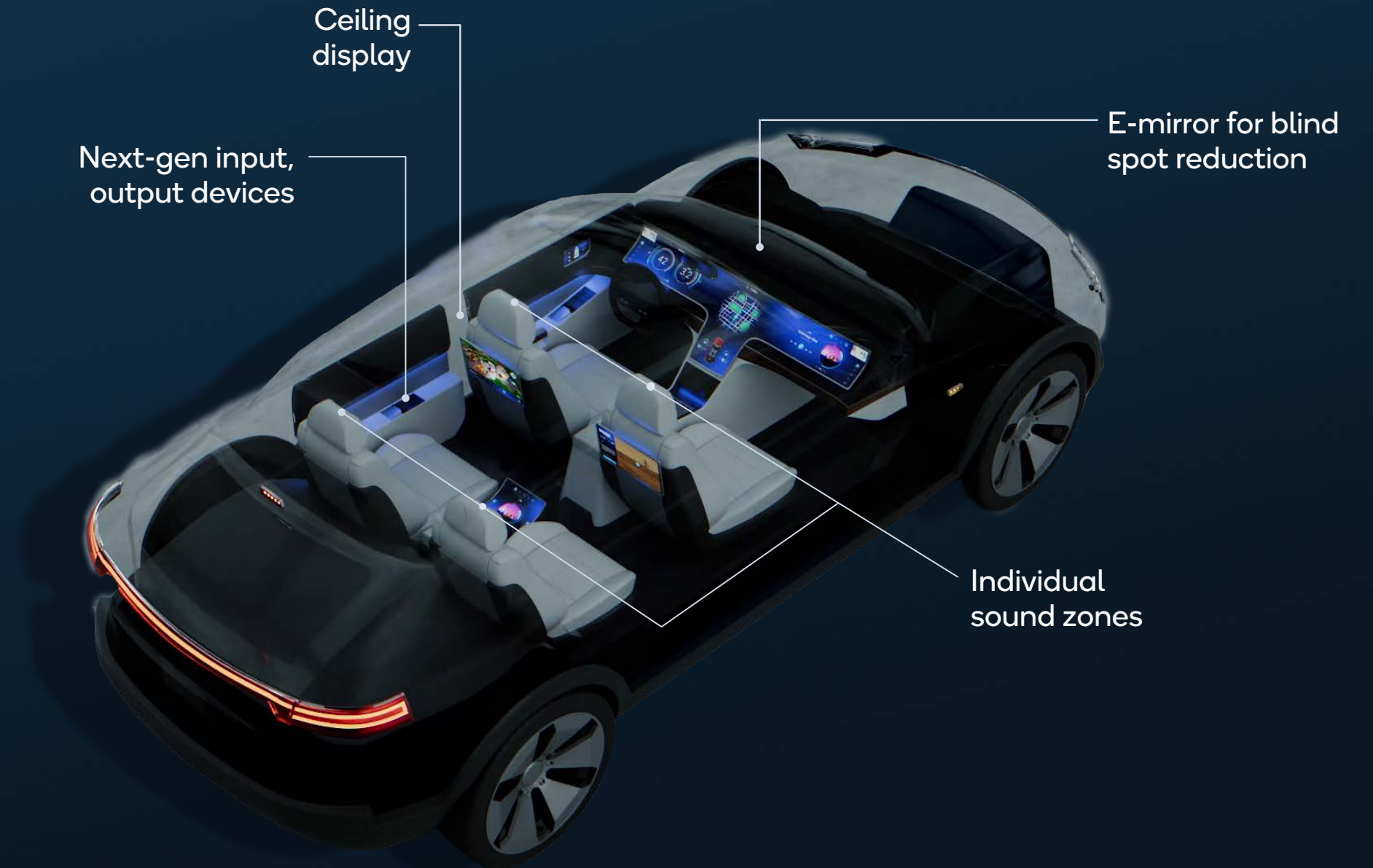
Announcement

Qualcomm

ALPSALPINE

Working together to bring advanced automotive in-cabin capabilities

New Digital Cabin designed to deliver
unmatched, next-generation experiences





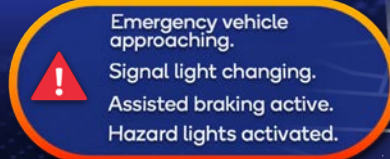
**The Digital Chassis powers
real-time engagement with
vehicle surroundings**



ALERT

Emergency vehicle approaching

3.25 m
Crosswalk at Stafford



Emergency vehicle approaching.
Signal light changing.
Assisted braking active.
Hazard lights activated.

POP
Technology Vibes
The Connection



23°
C

19°
C



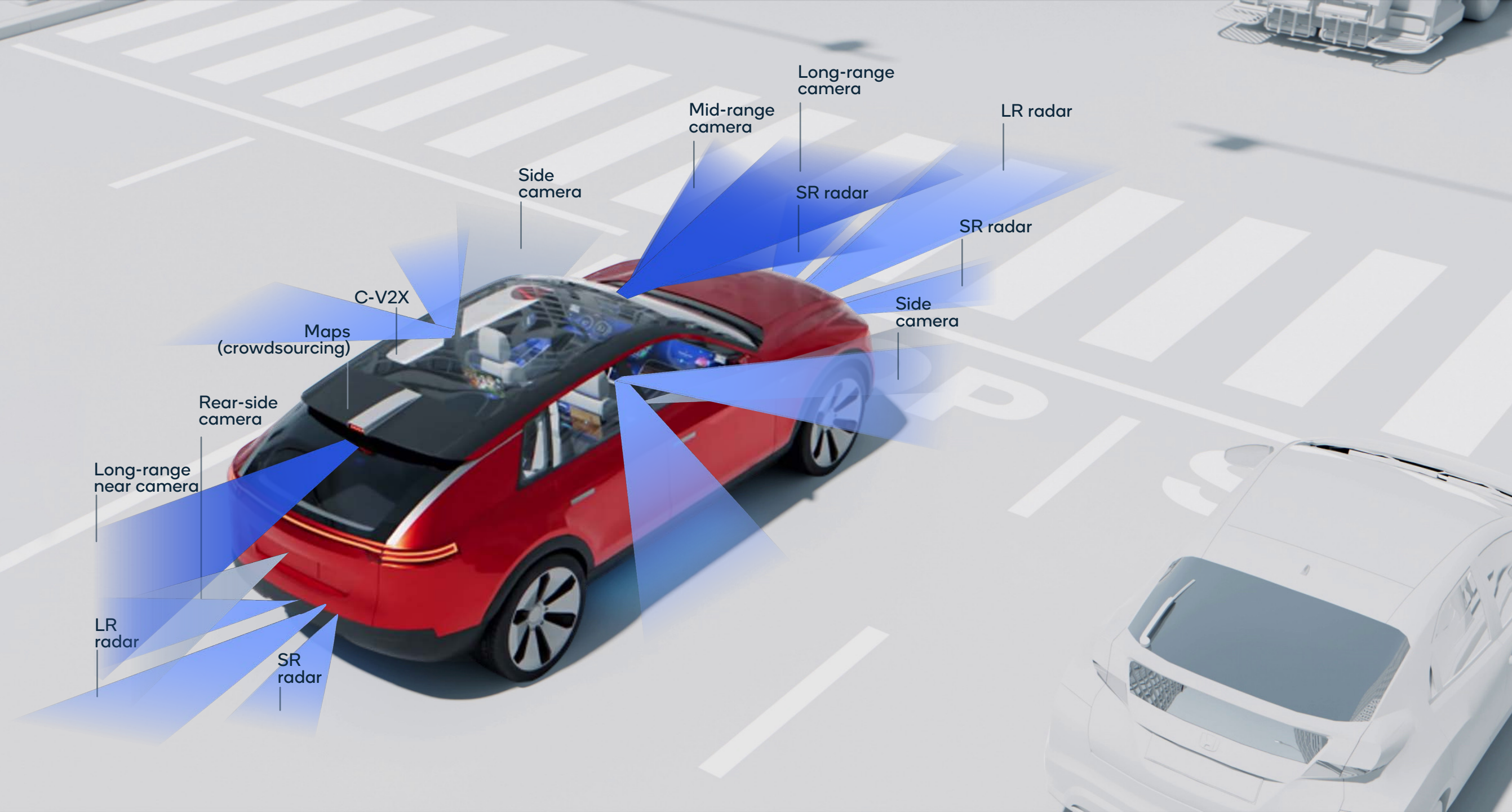
Snapdragon
ride platform

Qualcomm + **Arriver**^{TM 1}

Scalable

Open

Proven²



1. Acquisition expected to close in 2022, subject to regulatory approval and other closing conditions

2. Commercially proven independent of Qualcomm solutions

Announcement



Snapdragon

ride platform

Snapdragon Ride Vision System

Open, scalable and modular computer vision platform
Front and surround vision for ADAS / AD
Expected in commercial vehicles starting in 2024

NCAP Drive
Policy

Driver
monitoring

Parking
systems

Map
crowdsourcing

Integrated with Snapdragon Digital Chassis

Acquisition expected to close in 2022, subject to regulatory approval and other closing conditions



Qualcomm
+
Arriver™

Snapdragon Ride Vision SoC

Industry-leading 4nm SoC
for vision applications

Vision stack – AI and
vector processing



Perception and map
crowdsourcing



Ethernet, CAN
for vehicle interfaces
Radars, lidar



Automotive
cybersecurity



Hexagon
Processor

Kryo CPU

Embedded
Vision
Accelerator

Spectra ISP
(Camera processor)

Vehicle Interface
High Speed I/O

Video Processor
(VPU)

Secure Processor
Safety Island

Scalar and parallel processing for
integrated drive policy and parking



Front camera, surround cameras,
driver monitoring camera
Human and machine vision



Data recorder re-simulation
Continuous improvement



Designed for system safety
Fast boot, safety diagnostics

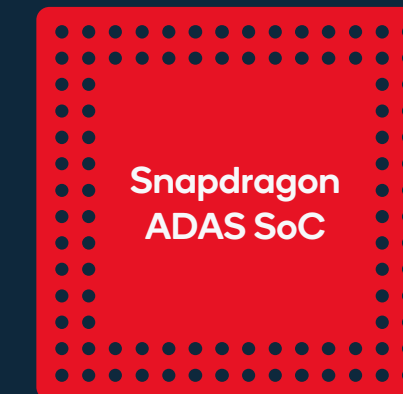




A comprehensive solution for advanced driver assistance and autonomous driving



Front Camera
Surround Vision



Scalable L1 to L3
ADAS SoCs



L3/L4 ADAS
Accelerator

Announcement

Broad
industry
support



Snapdragon
digital chassis



Snapdragon
car-to-cloud



Snapdragon
ride platform



Snapdragon
cockpit platform



Snapdragon
auto connectivity platform



1. Arriver expected to close in 2022, subject to regulatory approval and other closing conditions



Snapdragon
digital chassis



RENAULT

Luca de Meo

Chief Executive Officer, Renault S.A.





Working with all leading automakers

#1 in telematics, automotive connectivity and premium next-gen infotainment¹

All major global automakers have selected Snapdragon Cockpit platforms

Digital Chassis gaining momentum with telematics, cockpit, car-to-cloud, driver assistance & automated driving, and pending Arriver² acquisition

\$13B design win pipeline³

1. Internal sales data, infotainment for production cars starting in 2020; 2. Arriver expected to close in 2022, subject to regulatory approval and other closing conditions; 3. Includes Arriver/ADAS Software (Arriver expected to close in 2022, subject to regulatory approval and other closing conditions). As of 11/16/2021. Snapdragon Automotive Cockpit Platforms are products of Qualcomm Technologies, Inc. and/or its subsidiaries
Source: Internal data

Q&A

Broad support from ecosystem partners for the PC industry's transition to Arm-based computing

Collaboration with Microsoft to expand and accelerate AR to usher in new gateways to the metaverse

Qualcomm and Volvo cars enable Snapdragon-powered premium infotainment experiences for upcoming electric vehicles

Qualcomm works with Honda to bring digitally advanced in-cabin capabilities to new vehicles

Qualcomm and Alps Alpine work together to deliver advanced automotive in-cabin capabilities

Snapdragon Ride Vision System, an open and scalable platform for automated driving

Momentum around Snapdragon Digital Chassis to define the future of automotive

Qualcomm and Renault Group to extend collaboration and bring the latest digital advancements to next generation vehicles with the Snapdragon Digital Chassis

Desay SV and Qualcomm build premium in-vehicle experience based on the 4th Generation Snapdragon Cockpit Platforms

Thank you

Qualcomm

Follow us on:    

For more information, visit us at:
www.qualcomm.com & www.qualcomm.com/blog

Nothing in these materials is an offer to sell any of the components or devices referenced herein.

©2018–2022 Qualcomm Technologies, Inc. and/or its affiliated companies.
All Rights Reserved.

Snapdragon, Qualcomm, Snapdragon Sound, Snapdragon Elite gaming, Snapdragon Ride, Snapdragon Spaces, and Digital Chassis are trademarks or registered trademarks of Qualcomm Incorporated.

References in this presentation to “Qualcomm” may mean Qualcomm Incorporated, Qualcomm Technologies, Inc., and/or other subsidiaries or business units within the Qualcomm corporate structure, as applicable. Qualcomm Incorporated includes our licensing business, QTL, and the vast majority of our patent portfolio. Qualcomm Technologies, Inc., a subsidiary of Qualcomm Incorporated, operates, along with its subsidiaries, substantially all of our engineering, research and development functions, and substantially all of our products and services businesses, including our QCT semiconductor business.