

Qualcomm

Qualcomm® Insight Platform

The Qualcomm Insight Platform delivers an end-to-end video intelligence solution built on Qualcomm Technologies' industry-leading edge AI and on-device AI capabilities. Supports both greenfield and brownfield deployment, democratizing the use of AI in improving enterprise site security, real-time analytics, and providing actionable insights based on video data.

The Qualcomm Insight Platform can be deployed and managed centrally in the cloud or at the edge, providing flexibility around deployment models based on the specific needs of the industry and use-case. Powered by a broad ecosystem of camera, module, and system integrator partners, the Qualcomm Insight Platform enables tailored configurations that accelerate innovation and drive smarter outcomes.

Highlights

Centralized video intelligence management

The Qualcomm Insight Platform unifies video, analytics, and device data through a security-focused cloud-managed platform. Users gain real-time visibility across multiple sites via the Qualcomm Insight dashboards. The platform supports contextual search, LLM-based summarization, and easy-to-manage incident workflows for actionable, AI-driven decision-making.



Edge AI for real-time analytics

With distributed compute architecture, all video recording and machine learning occur on AI-powered cameras or Qualcomm® Edge AI Boxes, while only metadata and thumbnails are sent to the cloud. On-device models support motion detection, object tracking, person and face analytics, vehicle analytics, and weapon detection, enabling minimal latency and optimizing bandwidth usage for time-sensitive applications.



Built-in multimodal AI engine

The Qualcomm Insight Platform supports Vision Transformers (ViT), CNN models and Visual Language Models (VLMs). LLM integration capabilities via Merlin, a supported AI assistant, enables natural language video search and GenAI summarization. The platform supports both greenfield and brownfield deployments, allowing existing non-AI cameras to benefit from AI-driven analysis while enabling flexible upgrades and smooth system interoperability. It can be deployed and managed centrally in the cloud or at the edge, providing deployment flexibility based on the needs of each industry and use case.



Optimized performance, security, and TCO

Edge-first processing optimizes cloud dependency, and lowers bandwidth costs. Security-focus-by-design architecture provides encrypted transmission, secure boot, and trusted execution environment features. GenAI-powered analytics enhance situational awareness, productivity, and decision-making with contextual alerts, pattern detection, and natural language insights.



Qualcomm Insight Platform Applications

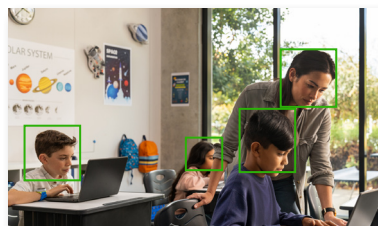
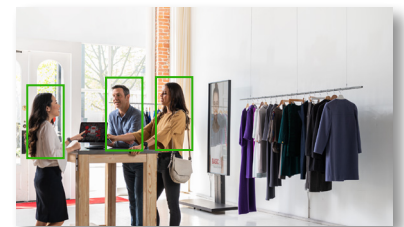
- Smart cities
- Manufacturing
- Energy & utilities
- Warehousing & logistics
- Retail & commercial
- Healthcare & education
- Transportation
- Buildings & enterprises

Features

- **Real-time spatial intelligence:** Advanced cross-camera Re-ID, path tracking, and spatial awareness through the “Footprints” feature
- **Multimodal AI assistant (Merlin):** Integrated LLM + VLM assistant for natural language video search, smart captioning, and automated report generation
- **Unified cloud-based management:** Centralized video management, user/device administration, and AI model orchestration via Cloud
- **Superior over-the-air updates:** OTA support for AI models, firmware, and third-party integrations including Bring Your Own Model (BYOM)
- **Flexible & security-focused deployment options:** Security-first architecture supporting on-prem, hybrid, and public cloud environments
- **Direct-to-cloud architecture:** Simplifies deployment, minimizes infrastructure needs, and reduces total cost of ownership (TCO)
- **Centralized event intelligence:** Unified alert/event handling, long-term archiving, and business analytics
- **GenAI-powered operational insights:** Proactive investigations, safety compliance monitoring, and automated incident summaries
- **Universal access & control:** Intuitive desktop and mobile dashboards accessible from anywhere-no VPN required

Platform Use Cases

Industry	Use cases
Smart cities	Vehicle and crowd monitoring, AI-assisted forensic investigations
Manufacturing	PPE compliance, slip-and-fall detection, zone-based access control, equipment safety monitoring
Energy and utilities	Remote site surveillance, perimeter security, worker safety alerts, real-time incident alerts
Warehousing and logistics	Dock monitoring, package theft prevention, workforce flow tracking, and forklift/vehicle safety monitoring
Retail and commercial	Customer flow analysis, loitering detection, organized retail crime prevention, heat mapping
Healthcare	Access control, patient/staff safety monitoring, automated incident response, data-secure surveillance
Education	Campus-wide surveillance, threat detection, access policy enforcement, incident response automation
Transportation	Terminal/platform surveillance, unattended object detection, crowd density alerts, security zone compliance
Building and enterprises	Lobby/perimeter monitoring, executive suite protection, ESG compliance reporting, centralized site oversight



To learn more visit: [Qualcomm Insight Platform](#)

©2025 Qualcomm Technologies, Inc. and/or its affiliated companies. All rights reserved. Qualcomm and Snapdragon branded products are products of Qualcomm Technologies, Inc. and/or its subsidiaries.